

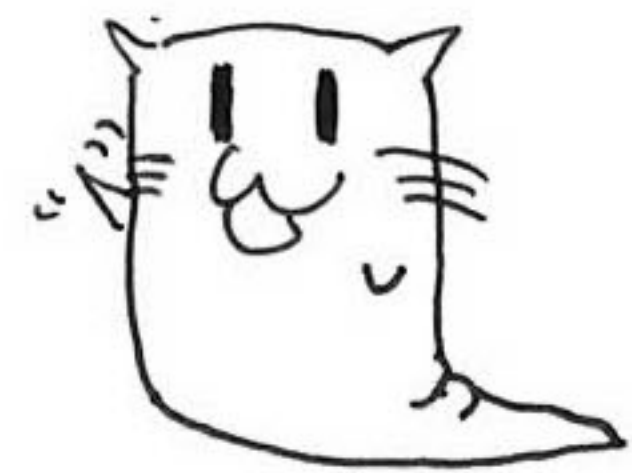
やあ!! どうも!! たきぎわですよ!!

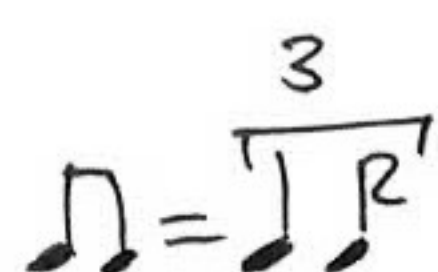
ノリノリなクリスマスカードハッピーアレンジの2012
今年もクリスマスカードをアレンジしてみたりしました。

2012年度と違ってアレンジをやるうとしたら
なんかめっちゃ難しくなっちゃったけれども
そこはみんなの気合いと勇気と愛を頑張る、といたただきたい。

それぞれのパートの解説動画もYoutubeにあるので
参考にしていただければと存じます。いんいん。
そんな感じで楽しくクリスマスも過ごして下せませー。

2013.12.9 たきぎわ





White Christmas Vocal ① 2013.12

[A]

Main

Choir 1

Choir 2

The sun is shining the grass is green

The orange plam trees way

There's

1

2

ne-ver been such a days

in Be-ver-ly hills

A

1

2

But it's Dec - sem - ber the twen - ty fourth

Dec - sem - ber twen - ty fourth

1

2

And I am lon - g'ing to be up snow

to be up snow

to be up snow

White Christmas Vocal ② 2013.12.

③

Handwritten musical score for "White Christmas" (Vocal ②), dated 2013.12. The score is written for three parts: M (Melody), 1 (First Part), and 2 (Second Part). The key signature is D major (two sharps: F# and C#). The time signature is 4/4.

System 1:

- M: "I'm dreamin' of a white Christmas
- 1: "
- 2: "

System 2:

- M: Just like the one I used to know when the
- 1: (I used to know)
- 2:

System 3:

- M: tree - tops glis - ten and child - ren lis - ten to
- 1:
- 2:

System 4:

- M: hear sleigh bells in the snow
- 1:
- 2:

Vocal (3)

2013.12.

↳ $\#A - \vee Q$ 後に \boxed{B} \wedge

White Christmas Vocal ④ 2013.12

ⓁⓂⓂ Coda

Musical score for three voices (M, 1, 2) in D major (two sharps). The score is divided into two systems. The first system contains the lyrics: "white and may all your christ-mas-es". The second system contains the lyrics: "be white". The notation includes treble clefs, key signatures, and various musical symbols such as notes, rests, and slurs.

System 1:

M: "white and may all your christ-mas-es"

1: " and may all your christ-mas-es"

2: " and may all your christ-mas-es"

System 2:

M: " be white"

1: " be white"

2: " be white"



$$\text{♩} = \sqrt[3]{\text{♩}^2}$$

White Christmas Guitar ① 2013.12

[I]

G/A x 0 0 0 x 3 4 5	$DM7$ 0 0 0 0 5 6 7	$Em9$ x 0 0 0 x 5 6 7	$A_7^{(13)}$ x 0 0 0 x 5 6 7	$DM7$ x 0 0 0 x 5 6 7
$Em9$ x 0 0 0 x 5 6 7	$A_7^{(13)}$ x 0 0 0 x 5 6 7	$DM7$ 0 0 0 x 5 6 7	$Em9$ x 0 0 0 x 5 6 7	$A_7^{(13)}$ x 0 0 0 x 5 6 7
G/A x 0 0 0 x 3 4 5	G/A x 0 0 0 x 3 4 5	$DM7$ 0 0 0 x 5 6 7		
$G_7^{(b5)}$ x 0 0 0 x 3 4 5	$C_7^{(\#9)}$ x 0 0 0 x 3 4 5	$F_7^\#$ 9 7	$F_7^\#$ 8 6	$Em9$ 7 5
				G/A x 0 0 0 x 3 4 5

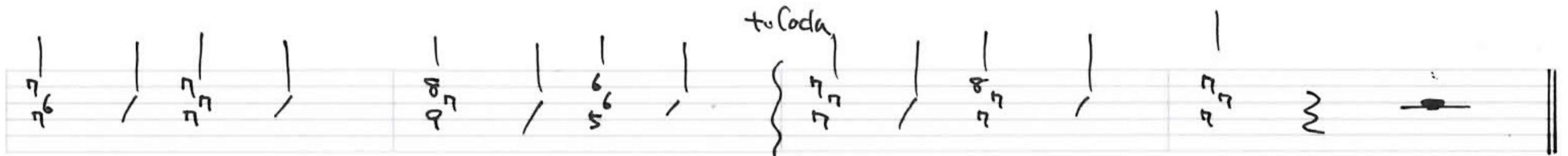
[A]

X X 7 X X 7 n v n v n v v		X X 8 X X / 9 7 8 6 7 5	X X 10 X X / 11 9 10 8 9 7
X X 8 X X / 9 7 8 6 7 5	X X 8 X X / 9 7 8 6 7 5	X X 7 6 5 / 7 6 5 4 3 2	5 4 3 2 1 / 5 4 3 2 1 0
X X 7 X X / 9 7 8 6 7 5	X X 7 X X / 9 7 8 6 7 5	X X 8 X X / 9 7 8 6 7 5	X X 8 X X / 9 7 8 6 7 5
X X 7 X X / 9 7 8 6 7 5	X X 7 X X / 9 7 8 6 7 5	6 5 4 3 2 / 7 6 5 4 3 2	5 4 3 2 1 / 5 4 3 2 1 0

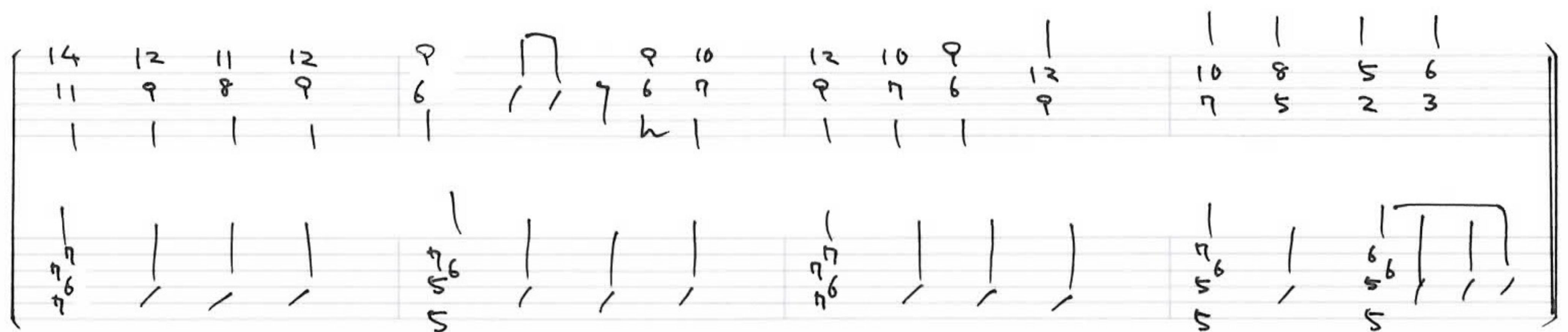
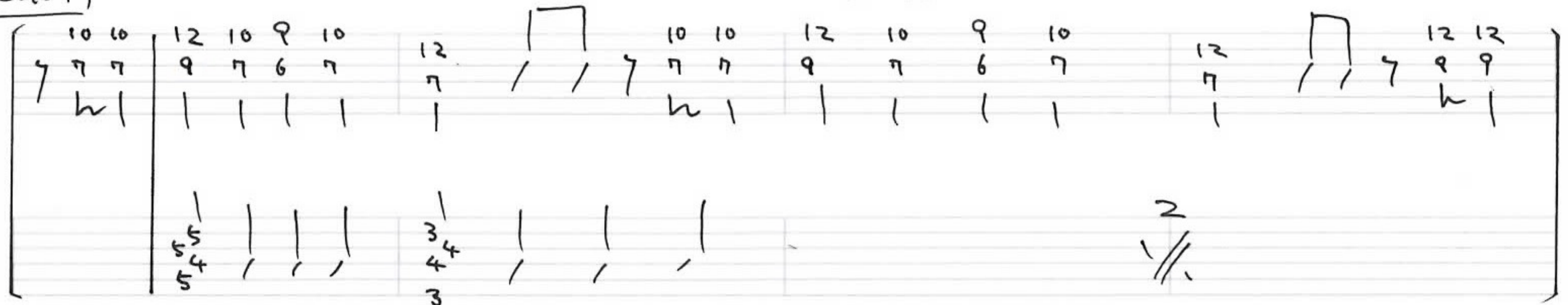
[B]

X X 7 X X / 9 7 8 6 7 5		X X 8 X X / 9 7 8 6 7 5	X X 10 X X / 11 9 10 8 9 7
X X 8 X X / 9 7 8 6 7 5	X X 8 X X / 9 7 8 6 7 5	X X 7 6 5 / 7 6 5 4 3 2	5 4 3 2 1 / 5 4 3 2 1 0
X X 7 X X / 9 7 8 6 7 5	X X 7 X X / 9 7 8 6 7 5	X X 8 X X / 9 7 8 6 7 5	X X 8 X X / 9 7 8 6 7 5
X X 7 X X / 9 7 8 6 7 5	X X 7 X X / 9 7 8 6 7 5	6 5 4 3 2 / 7 6 5 4 3 2	5 4 3 2 1 / 5 4 3 2 1 0

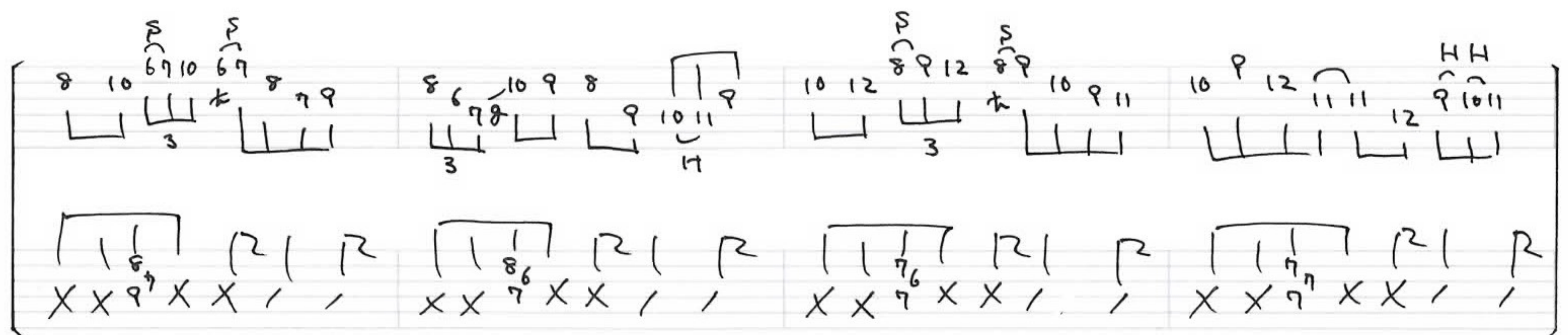
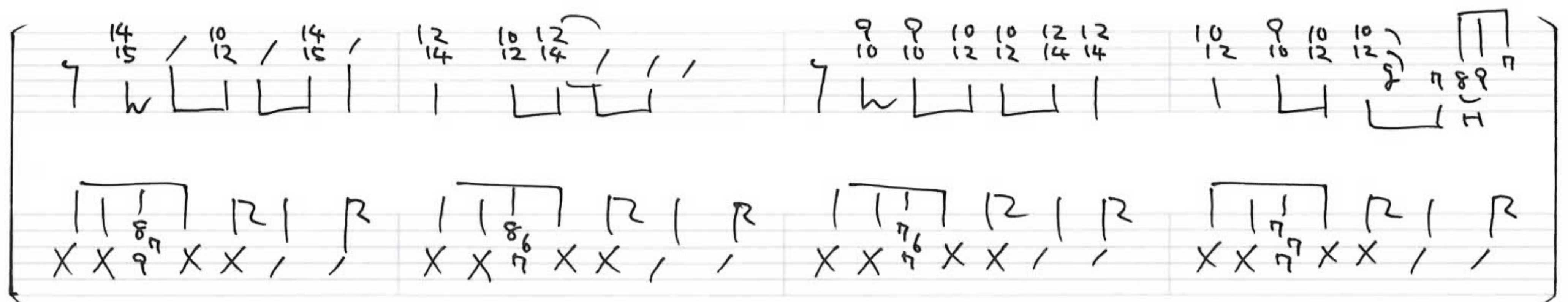
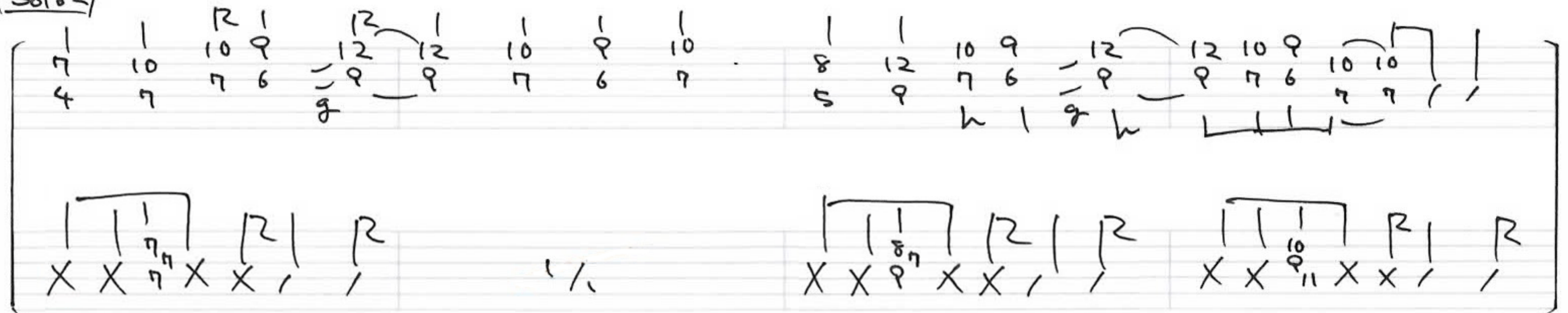
White Christmas Guitar ② 2013.12



Solo 1



Solo 2



White Christmas Guitar ③ 2013.12

Coda ①

①

イン → V. が 1~2人しかいない時には
バッキング・コードを弾いてあげよう
3人いる時は弾かなくてOK

A → 運指に気を付けてリズムに弾こう

Solo 2 → 後半は少しだけムズかしいけど
がんばって練習だい！

D → 最後の5小節の4和音がきつい時は
全部4弦の音を省略してOKです

2013.12

Handwritten musical notation on a five-line staff, featuring various notes, rests, and bar lines. The notation includes a key signature of one sharp (F#) and a common time signature (C). The notes are written in a stylized, handwritten manner, with some notes having a 'P' above them, possibly indicating a specific fingering or articulation. The staff is divided into measures by vertical bar lines, and the notation ends with a double bar line.

[illegible]

So(01)

Handwritten musical notation for So(01) on a grand staff. The notation is divided into two systems, each with two staves. The first system contains measures 1-4, and the second system contains measures 5-8. The notes are: Measure 1: 5, 2, 3, 4; Measure 2: 5, 6, 5, 3; Measure 3: 5, 2, 3, 4; Measure 4: 5, 4, 5, 6; Measure 5: 7, 4, 5, 6; Measure 6: 7, 5, 4(9), 8; Measure 7: 7, 4, 5, 6; Measure 8: 7, 3, 4. Vertical lines connect notes across staves in each measure. The final measure ends with a double bar line.

White Christmas Bass ② 2013.12.

2013.12.

Solo 2

1	1	1	1		1	1	1	1		1	1	1		7	5	4	2
5	4	5	5		5	4	5	6		7	6	7	9	1	1	1	1

5	4	5	9	7	9	11	1	1	6	7	8	9	7	5	1
1	1	1	1	1	1	1	10	9	1	1	1	1	1	1	9

1	1	5	6	7	6	7	1	1	1	1	8	9	7	5	1
7	9	1	1	1	1	1	8	9	8	9	1	1	1	1	9

Handwritten musical notation on a five-line staff, showing a sequence of notes and rests. The notes are labeled with numbers 1 through 5, indicating fingerings. The notation includes a key signature change (one sharp) and a repeat sign.

① B に なるよ

b ~~II~~ Coder

[illegible]

4 ずっとのばしていきると、コーラスと不協和しちゃうの
うまい具合にそっとすぐに音を止めてあげよう

④

1	1	1	1	1	1	1	1	1	1	1	1	1	1	1	1	1	1	1	1
5	5	3	5	2	2	5	1	2	0	2	2	0	2	0	4				

(5)

5			
---	--	--	--

$n = \overbrace{1 \ 2}^3$

[illegible][illegible]

White Christmas Drum ② 2013.12.

Solo 2

クローズド リム ショット
Closed Rim Shot → スネアのふちをカッカッさせる奏法
やり方は動画(演奏動画)で4エック!!

カッパ
Cup

→ ライドの中心をたたく奏法